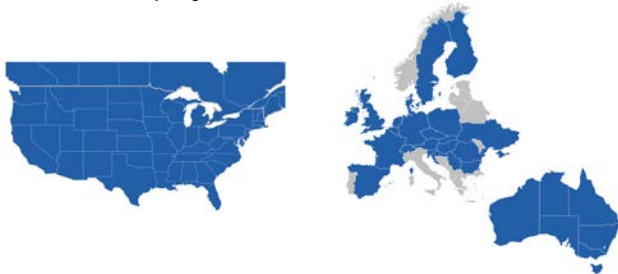




Media Fact Sheet

CRH is the leading provider of building materials critical to modernizing infrastructure. Our unmatched scale, connected portfolio, and deep local relationships make us the partner of choice for transportation, water, and reindustrialization projects, shaping communities for a better tomorrow. CRH (NYSE: CRH) is a member of the S&P 500 Index.

CRH is the market leader in North America, Europe and Australia, providing materials, products and services for some of the most iconic construction projects worldwide.



Our Business

Essential Materials

CRH is a leading producer of aggregates and cementitious materials which are essential in the production of concrete, concrete products and asphalt and are indispensable resources in construction activity worldwide.

Roads

We are the largest road paver in North America, using our connected portfolio of materials and products to help design, build, upgrade and maintain surface transportation infrastructure, including highways, streets, bridges and tunnels.

Critical Infrastructure

We work with large critical infrastructure owners to deliver vital infrastructure including municipal water systems, data centers and energy networks. Our value-added approach includes design, specification, manufacturing, installation and maintenance.

Outdoor Living

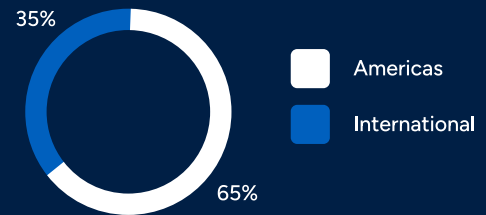
We are a leader in transforming outdoor spaces into dynamic living environments through our connected portfolio which includes hardscapes, masonry, fencing, railing, lawn and garden, pool finishes and composite decking.

At a Glance

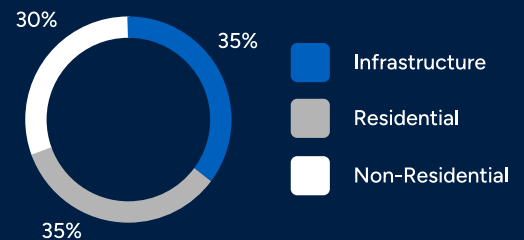
FY '24

Founded:	1970
Employees:	80,000
Locations:	4,000
Countries:	28
Revenue:	\$39.6bn
Adj. EBITDA:	\$6.9bn
M&A Spend:	\$5.0bn

Sales by Division



Sales by End-Market



Examples of Our Work



George Washington Bridge, New York

Provided thousands of tons of durable asphalt mixes and a sandblasting technique designed to withstand the extreme northeast weather conditions and the nearly 50 million eastbound automobiles, buses and trucks that cross one of the world's busiest bridges every year.



West Davis Highway, Utah

Opened in 2024, the West Davis Highway is a 16-mile, four-lane divided greenfield highway that provides greater connectivity throughout the region and reduces traffic delays by as much as 30%.



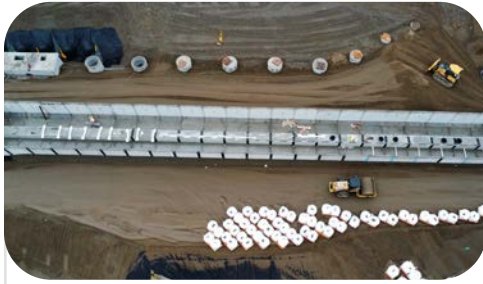
Cinco Ranch, Texas

CRH is a leader in water infrastructure. Flood mitigation requirements at a new residential development in Richmond, Texas were addressed with a custom-designed underground stormwater detention and treatment system.



A8 Kaiserstuhl Tunnel, Switzerland

CRH is offering a complete end-to-end solution for one of the largest ongoing construction projects in Switzerland, carving a 2.1km tunnel through the mountains to shield motorists from rockfalls and treacherous snow.



The City of Renton, Washington

A creative, unconventional use of box culverts installed upside down served as basins for water treatment, providing an innovative solution to treat and restore stormwater in Renton, Washington.



Newcastle Airport, United Kingdom

Our deep technical expertise in airport infrastructure was proven with the successful completion of the reconstruction and rehabilitation of a runway, within a high-pressure 6-hour operational window.

Driving Value Through Innovation

At CRH, our ability to replicate and scale our innovation and technical expertise across multiple geographies unlocks tremendous opportunity for further growth.

Our open innovation model harnesses the strength of our own internal research and development with the power of external partnerships and ventures.

Our Innovation Team includes a strategic network of engineers, chemists, geologists, industrial designers and laboratory technicians who help to turn ideas into practical, scalable solutions.

CRH Ventures is the Venture capital arm working with start-ups, industry players and academic institutions to pilot and scale new technologies.



Media Resources

Contact: media@crh.com

Website: crh.com/media

Follow: [in /crh](https://www.linkedin.com/company/crh)