

# Welcome

**Myles Lee**  
**Finance Director, CRH**



# Welcome

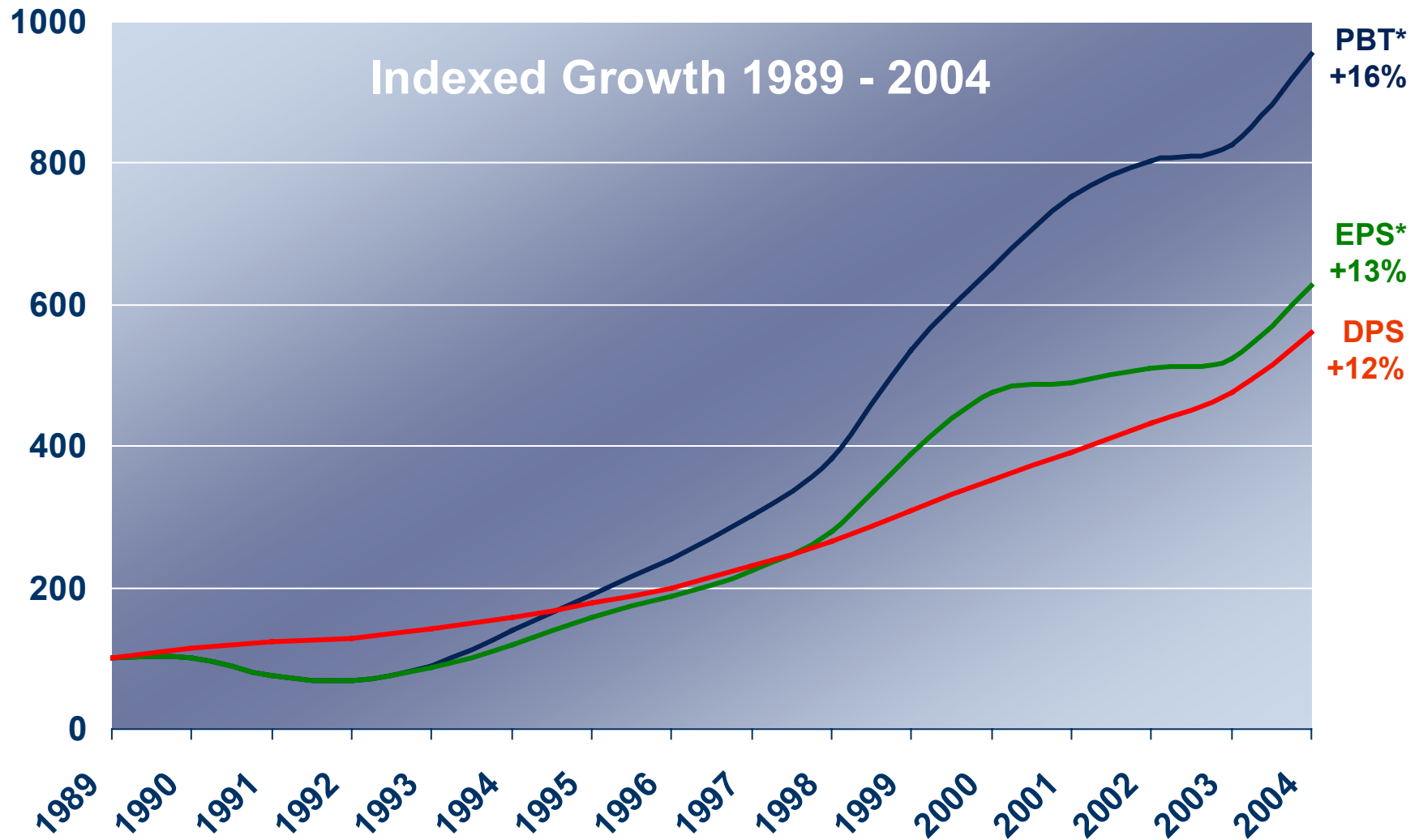
- Welcome to our 2005 Operational Visit for Investors and Analysts
  - A follow-on from our October 2004 briefing
  - Not a trading update
  - Full Year trading update will be issued in early January
- Aim is to provide
  - An overview of our current businesses in the Americas
  - An opportunity to visit one of each of our Product Group operations
  - Hear first hand from our Senior Executive Team in the Americas

# CRH Overview

## ***CRH ... The International Building Materials Group***

- Present in 24 countries; 3 continents; 2,100+ locations; 60,000+ people
- Annualized Sales currently circa €14 bn across three core businesses
- Listed Dublin (CRH.I), London (CRH.L), NASDAQ (CRHCY); Eurotop 300 stock
- Market capitalization circa €12bn
- Top 5 in sector worldwide
- 19% CAGR in Total Shareholder Return since 1970

# CRH Performance 1989 to 2004 ...

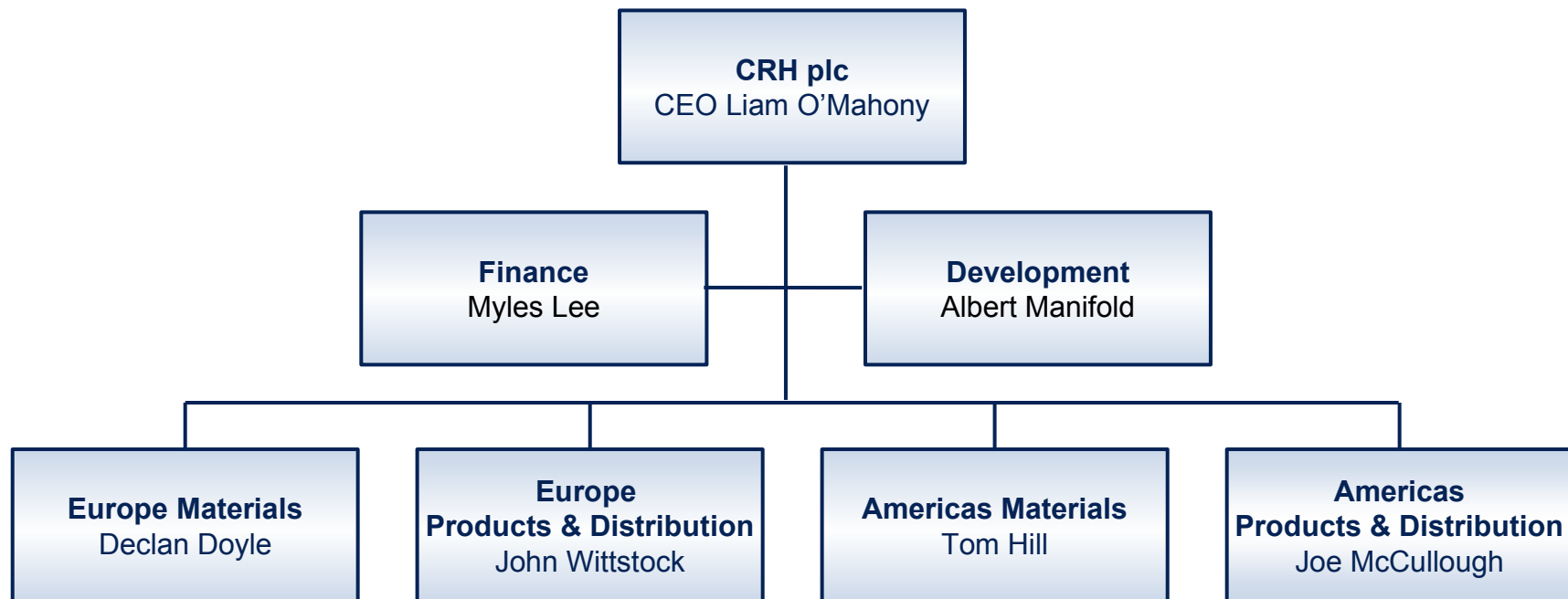


\*CAGR: Irish GAAP basis



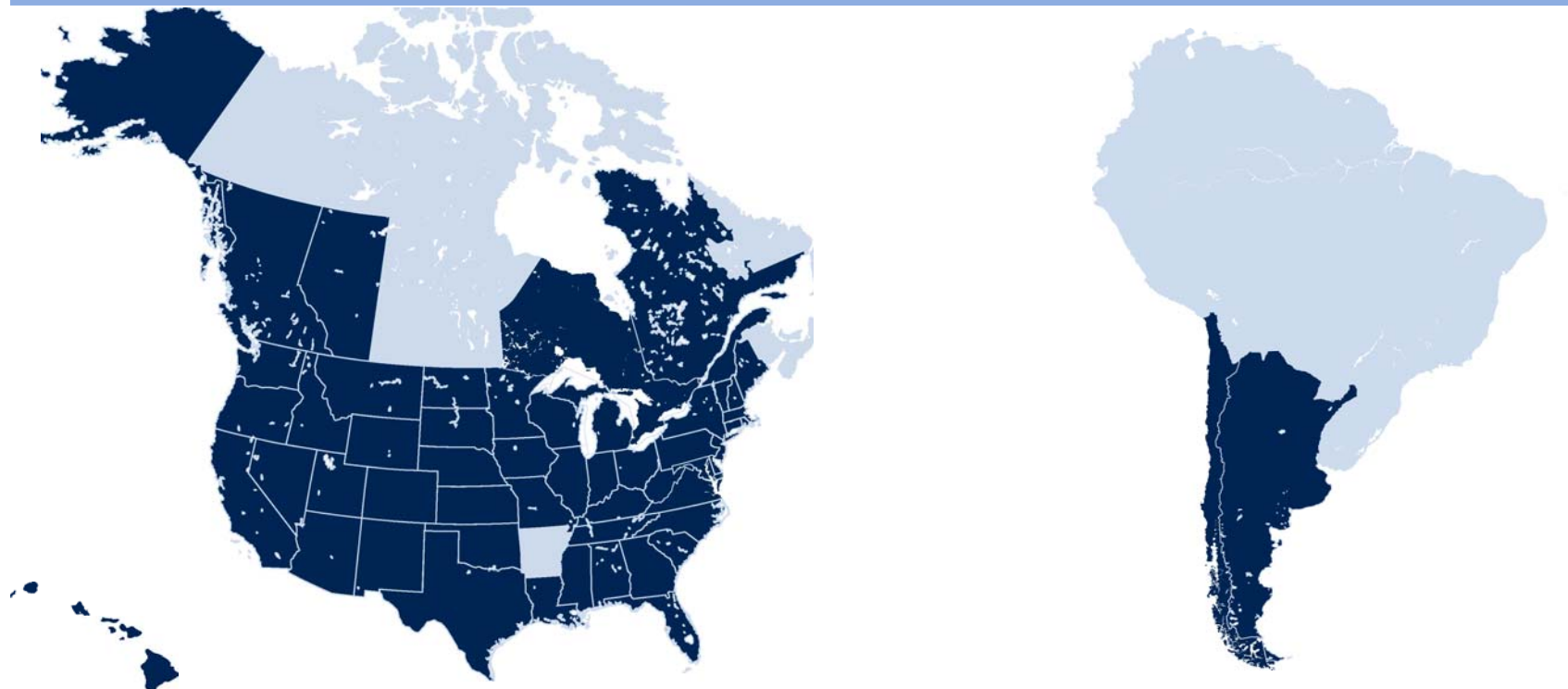
Investor / Analyst Visit, October 2005

## ... delivered by a Federal Organization ...



**A federal structure ... organized as 4 Divisions**  
**... managing 6 core business segments**  
**Europe & Americas ... Materials, Products, Distribution**

**... in which the Americas is c.50%**



<u>2004 (IFRS)</u>	<b>CRH Group</b>	<b>CRH Americas Operations</b>	
<b>Sales</b>	€ 12.8 bn	€ 6.3 bn	\$ 7.8 bn
<b>Operating Profit</b>	€ 1.2 bn	€ 0.6 bn	\$ 0.7 bn
<b>Average Net Assets</b>	~ € 8 bn	~ € 4 bn	~ \$ 5 bn
<b>No. Employees</b>	~ 60,000	~ 32,000	~ 32,000